

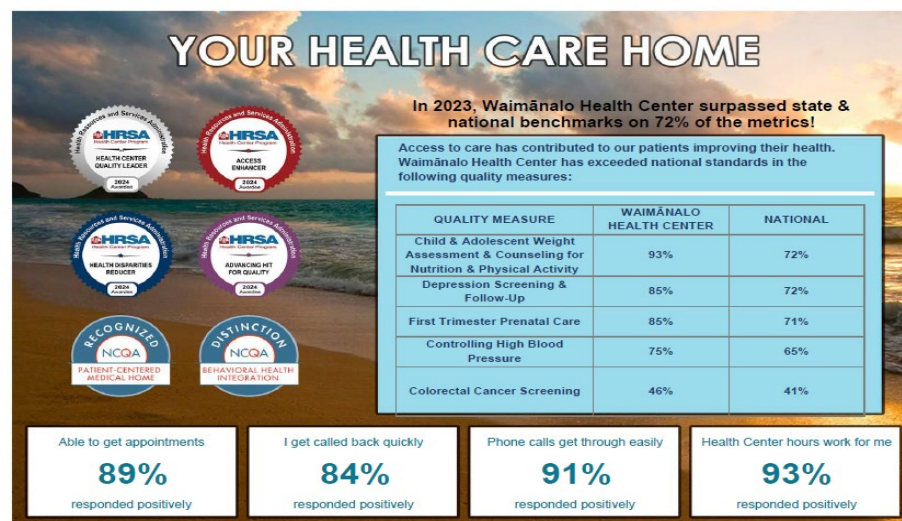


## Pediatric Primary Care Provider

Be the Family Medicine doctor you were trained to be! Enjoy practicing full-spectrum Family Medicine incorporating pediatrics and prenatal/postpartum care into your panel with no deliveries, minimal telephone call, and possibility for 4-day work week. Make a significant difference to a local community of 10,000+ people, largely Native Hawaiians, who are waiting for you to be their family doctor! Work and live within walking distance of our world-famous beaches and spectacular hiking trails. You will be a part of a [dedicated interdisciplinary team](#) of Care Management specialists, Dietitians, Psychologists, Psychiatrists, and traditional Native Hawaiian Healers. Come and visit our Award-Winning Community Health Center and fall in love!

For more information, check out [Waimanalo Health Center | Explore Our Career Opportunities](#).

- Comprehensive High-Quality Care for Complex Patient Population
- 12-16 Patients Per Day
- Team Care Model
- CMO and Associate Medical Director both practicing family docs
- Salary \$200k with full benefits and employer matching for 403(b) accounts
- HPSA Score 19
- Voted as one of the Best Places to Work in Hawai'i in 2025
- Public Service Loan Forgiveness
- Hawaii State Loan Repayment Program
- Tax credit for teaching, up to \$5000.
- And by far the most appreciative patients you've ever met.



It is a privilege and honor to be your health care home. Making sure you have access to our services is very important. Be it day or night, we are here to serve you. Contact your health care provider at 808-259-7948 or via Patient Portal. Or if you need us after hours, call Doctor's Answering Service Hawai'i (DASH) at 808-988-2188. At the Waimānalo Health Center, you are not just a patient; you are at the heart of the care team - part of the 'ohana.

## **Mission**

Waimānalo Health Center is rooted in Native Hawaiian values and devoted to improving the health and wellness of all people, regardless of ability to pay, by providing comprehensive primary and preventive health care services of the highest quality.

## **Vision**

Waimānalo Health Center is dedicated to the continuous advancement in quality healthcare while assuring universal access for all. We believe that our values of Aloha, Mālama I Ka Pono, Mālama I Ka 'Ohana, and Mālama I Ka 'Āina, enable our patient-centered healthcare home services to deeply focus on the shared role of healing oneself, 'ohana, community, and 'āina over generations.

## **Core Values and Guiding Principles**

Waimānalo Health Center welcomes all members of the Ko'olaupoko community to access our holistic services ranging from traditional Hawaiian healing practices to Western medicine.

**Aloha:** We listen to people with our full attention, seeking to know them and understand their health care and wellness needs and aspirations for themselves, their family and community. We will respond, to the best of our abilities, as caring, compassionate, engaged, and professional partners in healthcare.

**Mālama I Ka Pono:** We know that quality healthcare starts with people's trust in our services and the excellence of our care for them and the resources entrusted to us to meet their needs. We are committed to maintaining their trust by treating people with respect and confidentiality, and by being open about our organizational practices and results, seeking to continuously improve our work.

**Mālama I Ka 'Ohana:** We believe that wellness embraces the whole family, and we welcome their participation in the healthcare of their loved ones. Our belief extends from the Ahupua'a of Waimānalo throughout Ko'olaupoko where we build the foundation for good health and wellness for everyone, and we seek collaborative partners who share our values and vision.

**Mālama I Ka 'Āina:** We understand the importance of one's sense of place and the holistic nature of health and wellbeing. Through integrative services we support the balance of body, mind, and spirit, while respecting one's cultural connectedness to the 'āina of Hawai'i. Ka Maui O Ka 'Āina A He Maui Kānaka: The Life of the Land is the Life of the People

## **Benefits**

*Waimanalo Health Center is dedicated to offering employees an exceptional work environment and offers competitive salaries and benefits.*

## **Benefits**

- Health Benefits (Medical, Dental Drug, Vision)
- Employee Retirement Savings Plan 403(b) – Employer matches 66.67% of employee's contribution up to a maximum of 6% of employee wages after six months of employment.
- Flexible Spending Program

- Paid Holidays – 10 Full days and 2 Half Days
- Paid Time Off (PTO): Accrual based on working 40 hours per week
  - 1 to 3 years – Max. Accrual = 120 hours
  - 3 to 8 years – Max. Accrual = 160 hours
  - 8 + years – Max. Accrual = 200 hours
- Paid Wellness Hours (2 hours per pay period based on FTE)
- Wellness Bucks – Up to \$200 annually
- Bereavement Leave
- Makahiki – Employee Appreciation Day
- Jury Duty Pay, Casual Dress Friday, Longevity Benefit After 5 or more years of service
- Tuition Assistance Program
- Discounted Medical,
- Dental and Vision services provided by WHC Employee Assistance Program (EAP)
- Group Term Life Insurance Supplemental Group Term Life Insurance & AD&D Insurance
- Lifestyle Benefits
- Free Parking

### **Qualifications**

- Commitment to care for underserved communities is required.
- Basic computer skills such as use of email, web browser, word processor, and spreadsheet are required.
- Ability to communicate effectively with individuals, groups, and professionals in a culturally appropriate manner is required.
- Ability to work effectively as a member of a team is required.
- Experience working in a Federally Qualified Health Center is preferred.
- Familiarity with the Waimānalo area and Hawaii in general is preferred.
- Ability to use an Electronic Medical Record (EMR) is required. Prior experience with our specific EMR (Nextgen) is preferred.

### **Certificates, Licenses, Registration**

- Certificate of graduation from an accredited medical school (MD or DO)
- Certificate of graduation from an accredited residency
- Board eligibility is required, and board certification is strongly preferred
- Valid Hawaii MD or DO license, Federal DEA, and State Narcotics license
- Basic Life Support (BLS) certification
- Two-Step Tuberculosis (TB) clearance
- Proof of immunity to hepatitis B with immunization records of complete hepatitis B vaccination series and a surface antibody blood test